

# UR12

USB



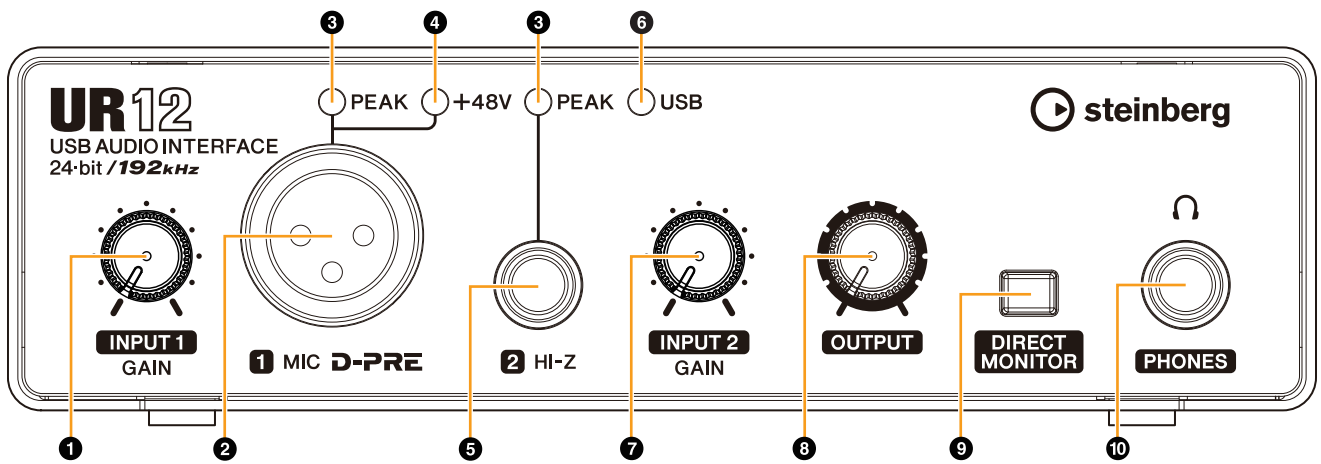
---

.....	2
.....	3
.....	3
.....	4
.....	6
<b>UR12</b> .....	9
.....	9
.....	10
/ .....	10
.....	13
.....	15
- .....	15

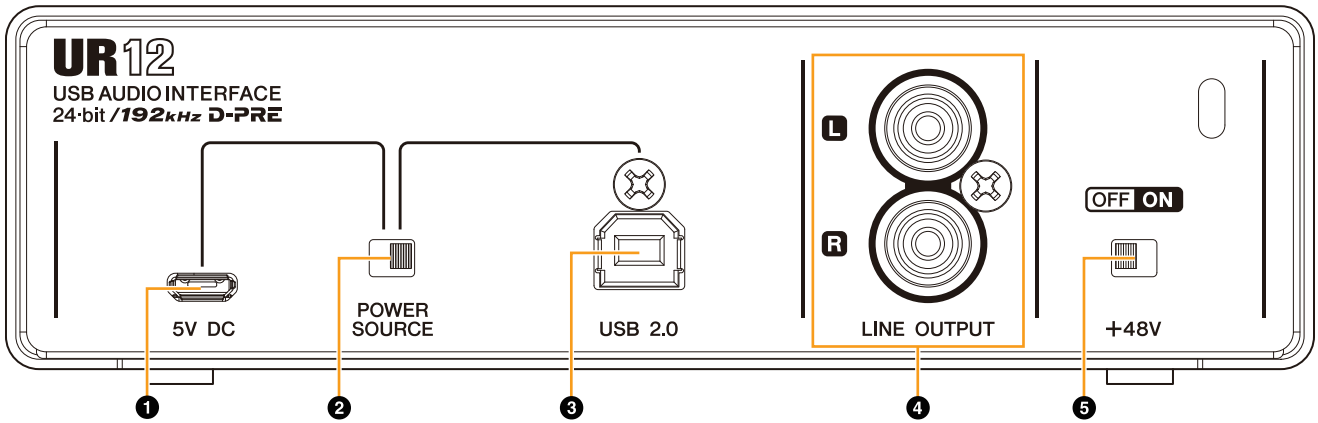
---

	USB	UR12.
UR12 -	UR.	
,		,
,		,
HI-Z		"D-PRE"
,		,
,		,
UR	UR12	
	Windows, Mac iPad.	
UR12 iPad		5V DC.
		USB
		,
		,
	UR12	
,		,
,		,

Steinberg



- 1 [INPUT 1 GAIN] [MIC].
- 2 [MIC] [LINE OUTPUT] [PHONES].
- 3 [PEAK] [LINE OUTPUT].
- 4 [+48V] [PEAK]
- 5 [HI-Z] [MIC]/[HI-Z],
- 6 USB DAW ( iPad,
- 7 [INPUT 2 GAIN] [HI-Z].
- 8 [OUTPUT]. [LINE OUTPUT].
- 9 [DIRECT MONITOR]
- 10 [PHONES]



**1 [5V DC]**

USB  
UR12  
iPad. (UR12)

micro-USB 5  
: 4,8 5,2  
: 0,5

[5V DC]  
UR12  
USB [5V DC]  
[POWER SOURCE]  
[5V DC].  
UR12  
USB

**2 [POWER SOURCE]**

UR12.  
[USB2.0],  
[USB2.0].  
[5V DC],  
[5V DC].  
iPad  
[5V DC].  
[5V DC],  
[USB 2.0],  
iPad

USB  
[USB 2.0],  
iPad  
[5V DC],  
iPad

**3 [USB2.0]**

iPad.  
USB  
USB  
UR12  
USB

- USB
- USB 3.0
- USB
- / USB
- / USB
- [USB2.0]
- / USB
- / USB 6

4

[LINE OUTPUT]

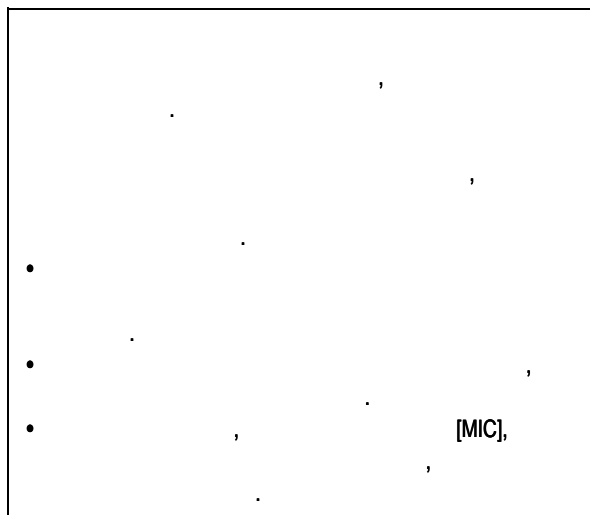
RCA.

5

[+48V]

+48  
XLR,

[MIC],



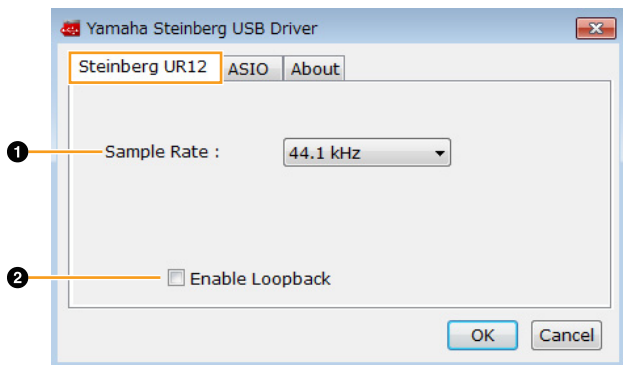
Yamaha Steinberg USB Driver - UR22mkII (Control Panel) Windows Mac.

Yamaha Steinberg USB Driver iPad.  
**Yamaha Steinberg USB Driver (Windows)**

- [ ] -> [ ]  
 [ ] -> [ ]  
 [Yamaha Steinberg USB Driver].
- Cubase [Devices]-> [Device Setup...] -> [Yamaha Steinberg USB ASIO] -> [Control Panel]

### Steinberg UR12

Loopback.



#### 1 Sample Rate

: 44,1 , 48 , 88,2 , 96 , 176,4 , 192

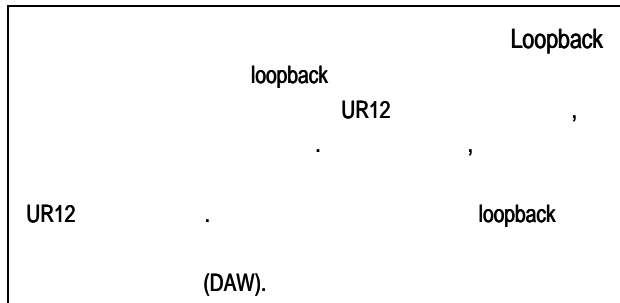
#### 2 Enable Loopback

Loopback

### Loopback?

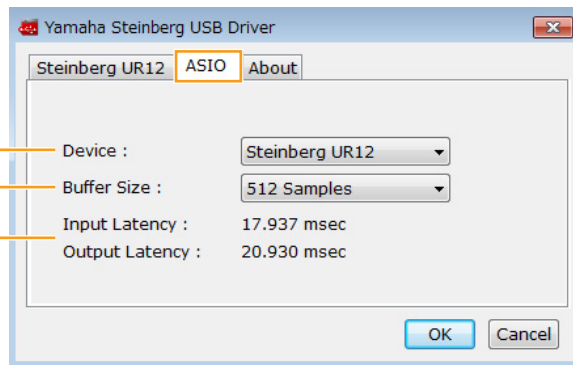
Loopback -

UR22mkII,



### ASIO

ASIO



#### 1 Device

ASIO (

Yamaha Steinberg USB Driver).

#### 2 Buffer Size

ASIO

44.1 /48	64	- 2048
88,2 /96	128	- 4096
176,4 /192	256	- 8192

#### 3 Input Latency/Output Latency

( )

ASIO.

## About



## About Window



(Mac).

[Audio MIDI Setup].

## Yamaha Steinberg USB Driver ( Mac)

- [System Preferences] -> [Yamaha Steinberg USB].
- Cubase [Devices] -> [Device Setup...] -> [Steinberg UR12] -> [Control Panel] -> [Open Config App].

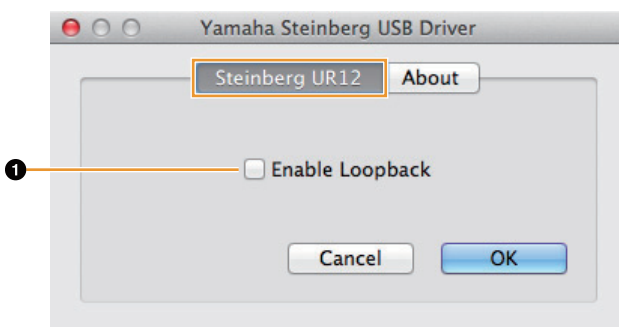
[Applications] -> [Utilities] ->

[Audio MIDI Setup].

[Format].

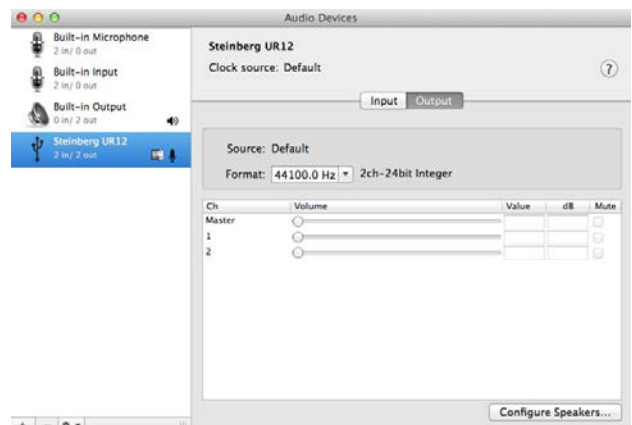
## Steinberg UR12

loopback.



### 1 Enable Loopback

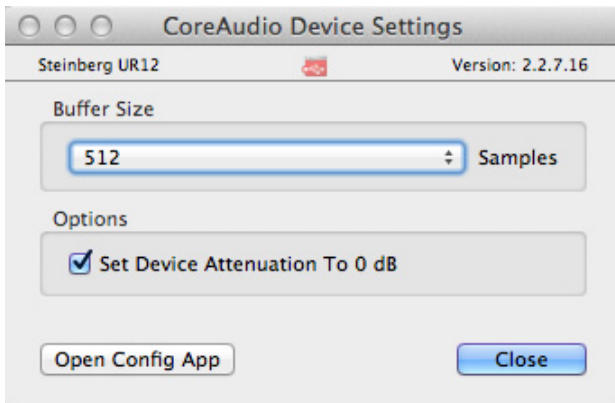
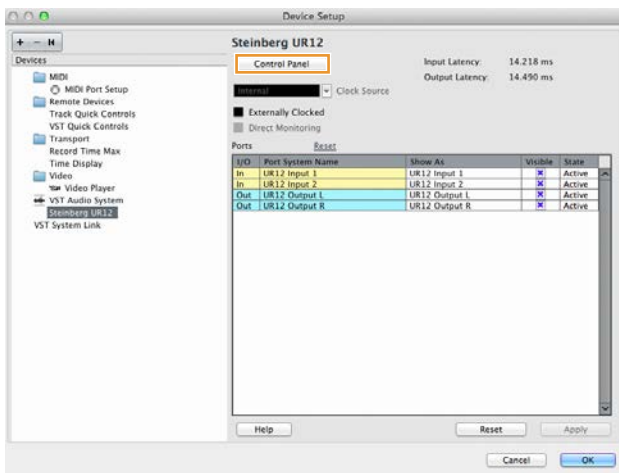
loopback.



# (Mac)

[Device Setup...] Cubase [Devices]->

[Control Panel] [Steinberg UR12]

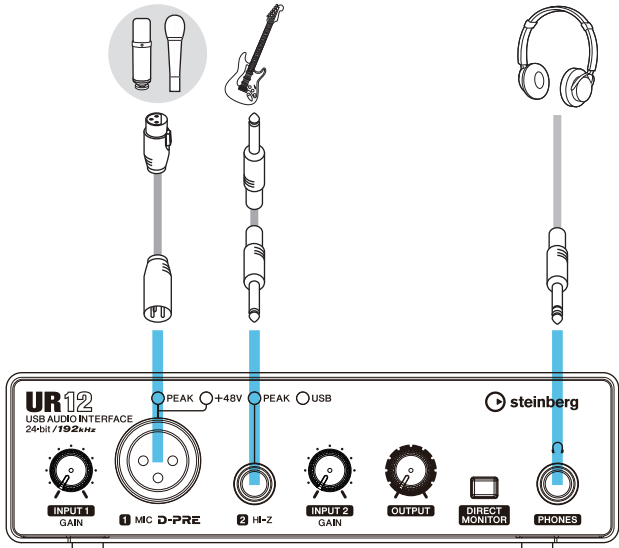
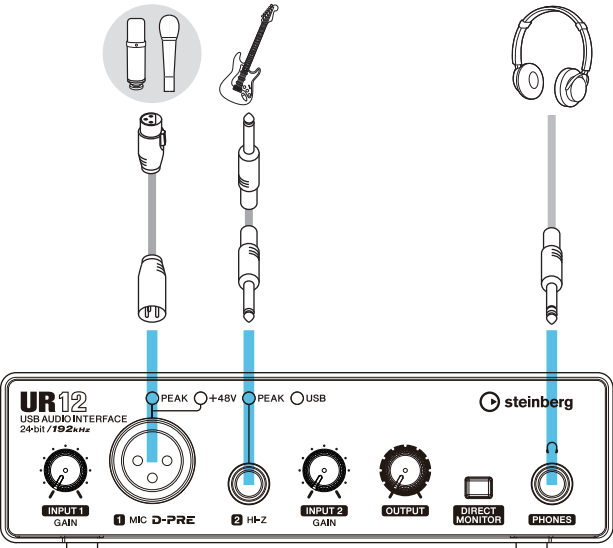




# UR12



## iPad



- UR12 iPad  
Lightning - USB Camera Adapter

Apple iPad Camera Connection Kit

- iOS

Steinberg.

<http://www.steinberg.net/>

7. ASIO

Windows

Mac.

Windows

ASIO

[Yamaha Steinberg USB ASIO].

Mac

UR12

UR12

Cubase

1.

2.

[POWER SOURCE],  
[USB2.0].

3.

USB

( Windows)

USB

USB

Steinberg USB Driver.

USB

Yamaha

4.

Cubase.

5.

Cubase  
[ASIO Driver Setup],

UR12,

[OK].

1.

2.

[POWER SOURCE],  
[USB2.0].

3.

USB

1  
Yamaha Steinberg USB Driver.

( Windows)

USB

USB

Steinberg USB Driver.

USB

Yamaha

4.

DAW.

5.

6.

( Windows).

ASIO

1.

Cubase.

2.

( ),

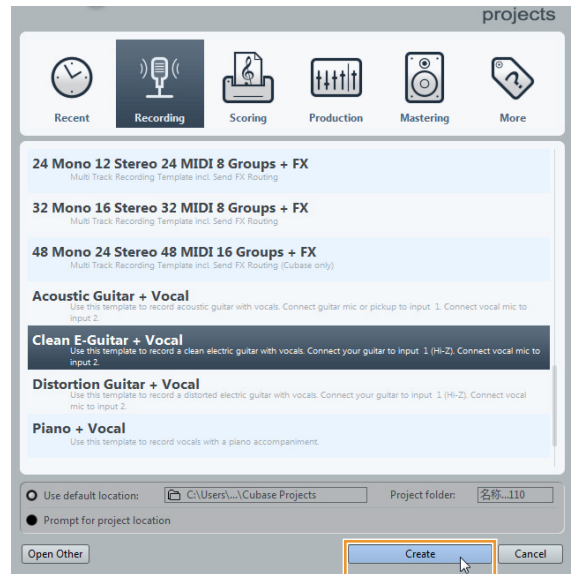
[Create] (

[Recording]

[Clean

E-Guitar + Vocal] (

).



• [Missing Ports] ( UR22mkII ),

[Mapped ports].

• [Map Always] ( ),  
[OK].

3.

[Devices] - [VST Connections]  
[VST Connections].

4. UR12 [Device Port] Inputs ( ) Outputs ( ).

Inputs

VST Connections - Inputs																																			
Inputs	Outputs	Group/FX																																	
<table border="1"> <thead> <tr> <th>Bus Name</th> <th>Speakers</th> <th>Audio Device</th> <th>Device Port</th> </tr> </thead> <tbody> <tr> <td>Stereo In 1</td> <td>Stereo</td> <td>Not Connected</td> <td></td> </tr> <tr> <td>  Left</td> <td></td> <td></td> <td>Not Connected</td> </tr> <tr> <td>  Right</td> <td></td> <td></td> <td>Not Connected</td> </tr> <tr> <td>Mono In 1</td> <td>Mono</td> <td>Yamaha Steinberg USB ASIO</td> <td>UR12 Input 1</td> </tr> <tr> <td>  Mono</td> <td></td> <td></td> <td>UR12 Input 2</td> </tr> <tr> <td>Mono In 2</td> <td>Mono</td> <td>Yamaha Steinberg USB ASIO</td> <td></td> </tr> <tr> <td>  Mono</td> <td></td> <td></td> <td></td> </tr> </tbody> </table>	Bus Name	Speakers	Audio Device	Device Port	Stereo In 1	Stereo	Not Connected		Left			Not Connected	Right			Not Connected	Mono In 1	Mono	Yamaha Steinberg USB ASIO	UR12 Input 1	Mono			UR12 Input 2	Mono In 2	Mono	Yamaha Steinberg USB ASIO		Mono						
Bus Name	Speakers	Audio Device	Device Port																																
Stereo In 1	Stereo	Not Connected																																	
Left			Not Connected																																
Right			Not Connected																																
Mono In 1	Mono	Yamaha Steinberg USB ASIO	UR12 Input 1																																
Mono			UR12 Input 2																																
Mono In 2	Mono	Yamaha Steinberg USB ASIO																																	
Mono																																			

Outputs

VST Connections - Outputs																			
Inputs	Outputs	Group/FX	External FX																
<table border="1"> <thead> <tr> <th>Bus Name</th> <th>Speakers</th> <th>Audio Device</th> <th>Device Port</th> </tr> </thead> <tbody> <tr> <td>Stereo Out</td> <td>Stereo</td> <td>Yamaha Steinberg USB ASIO</td> <td></td> </tr> <tr> <td>  Left</td> <td></td> <td></td> <td>UR12 Output L</td> </tr> <tr> <td>  Right</td> <td></td> <td></td> <td>UR12 Output R</td> </tr> </tbody> </table>	Bus Name	Speakers	Audio Device	Device Port	Stereo Out	Stereo	Yamaha Steinberg USB ASIO		Left			UR12 Output L	Right			UR12 Output R			
Bus Name	Speakers	Audio Device	Device Port																
Stereo Out	Stereo	Yamaha Steinberg USB ASIO																	
Left			UR12 Output L																
Right			UR12 Output R																

5. [DIRECT MONITOR]

6. [INPUT GAIN]

[MIC/LINE 1],

[INPUT 1 GAIN].  
[MIC/LINE 2],  
[INPUT 2 GAIN].

[PEAK]

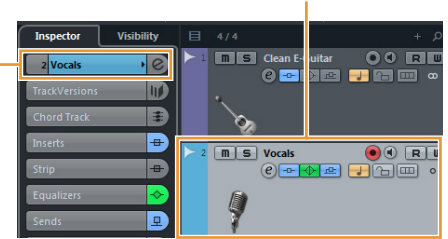
7. [PHONES].

8.

9.

[MIC/LINE 1]:

[Fader].

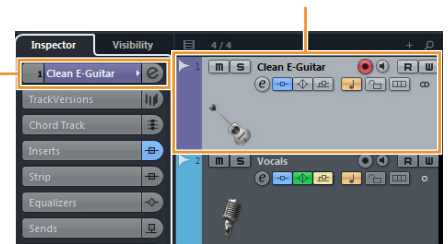


[Mono-In 1].



[HI-Z]:

[Fader].



[Mono-In 2].



10. [●]



11. [■]



12. Ruler



13. [▶]



[OUTPUT].

Cubase,

[HELP]

1. DAW.

2. [DIRECT MONITOR]

3. [INPUT GAIN]

[INPUT 1 GAIN], [MIC],

[HI-Z],

[INPUT 2 GAIN].

[PEAK]

4. [OUTPUT].

5.

6.

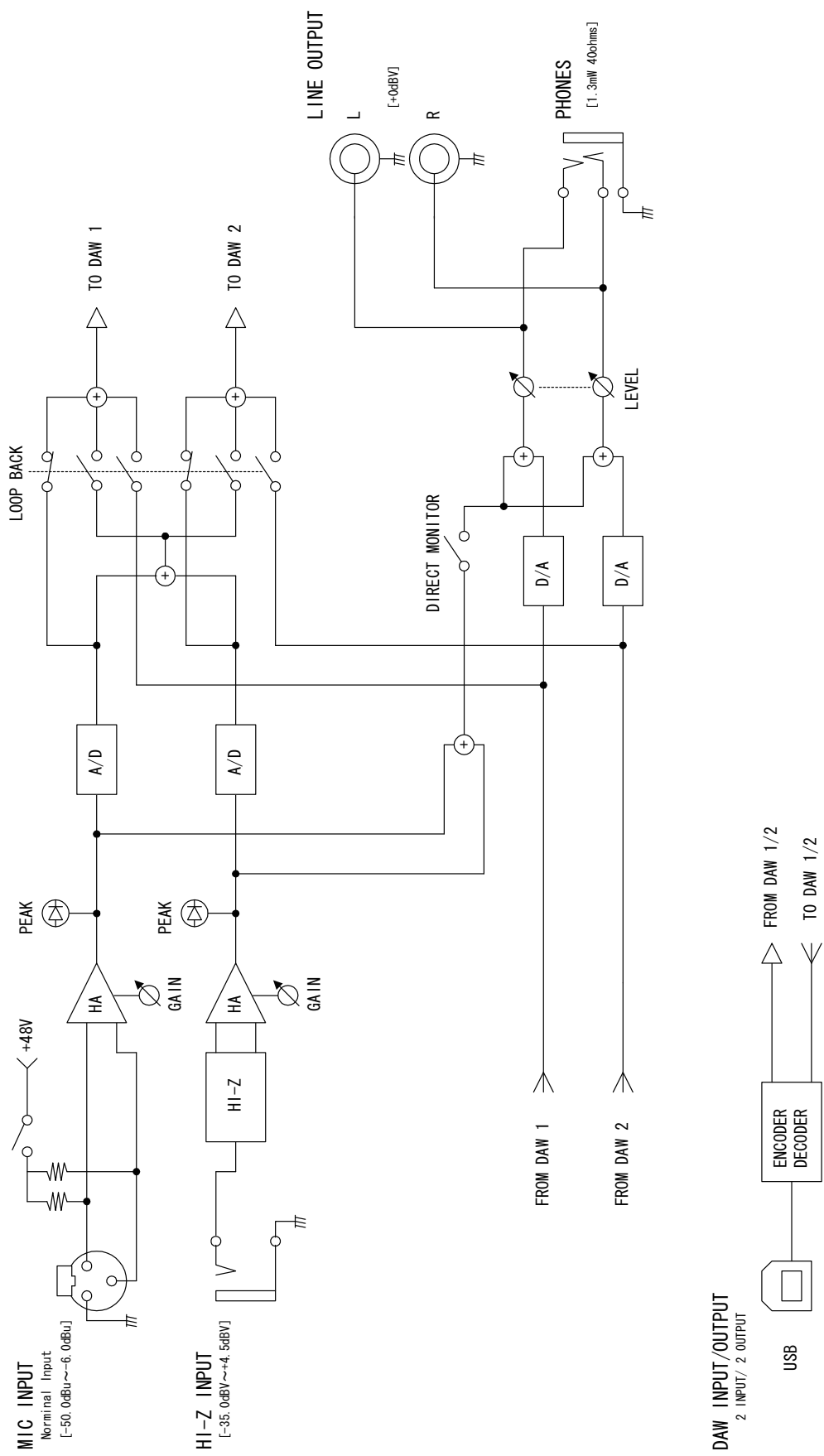
7.

	<p>USB Yamaha Steinberg USB Driver ? USB .</p>
	<p>USB , USB . , USB 3 . , . ,</p>
	<p>[POWER SOURCE] ? USB . [USB2.0], USB, [5V DC] ,</p>
	<p>USB Yamaha Steinberg USB Driver ? USB .</p>
	<p>[OUTPUT]. ?</p>
	<p>" " , , ?</p>
	<p>" " ?</p>
	<p>Cubase ASIO Cubase? [Devices] -&gt;[Device Setup...] -&gt; [VST Audio System], [ASIO Driver] [Yamaha Steinberg USB ASIO] ( Windows) [Steinberg UR22mkII] ( Mac).</p>
	<p>(DAW), , ?</p>
	<p>USB ?</p>
	<p>, ?</p>

( , )	<p>“Yamaha Steinberg USB Driver (Windows)” ( .6)  (Mac)” ( .7).</p>
	<p>Steinberg.  <a href="http://www.steinberg.net/">http://www.steinberg.net/</a></p>
	?
	?
	<p><b>loopback</b> ?</p> <p>“ Yamaha Steinberg USB Driver (Windows)”  (.6) “ Yamaha Steinberg USB Driver (Mac)” ( .7).</p>
	?
	<p><b>[DIRECT MONITOR]</b> ?  [DIRECT MONITOR] " " (ON)</p> <p>OFF,</p>

Steinberg.

<http://www.steinberg.net/>



Steinberg Web Site  
<http://www.steinberg.net/>

© 2014 Yamaha Corporation

Published 10/2014 发行 MWA0

